



# Flight Plan & Site Survey

Created using **RPAS Wilco®**

Operation Name:	Alouette lake
Pilot Name:	██████████
Pilot Certificate:	██████████
Flight Start:	April 13, 2023 6:50 PM
Flight End:	April 13, 2023 8:50 PM
Flight Area (Latitude):	49° 17' 22.50" N ( 49.29 )
Flight Area (Longitude):	122° 29' 21.30" W ( -122.489 )
Altitude - Radius:	Alt: 700 ft - Rad: 926.0 m ( 0.5 nm)
Airspace:	ADVISORY
FIR - Contact:	CZVR - 604-586-4500

Please ensure you received all required authorizations prior to flight.

## Disclaimer

This Site Survey was created using RPAS Wilco by AIM Robotics. The flight plan contained is intended only for RPAS flights on the date/time and location specified. The user accepts all responsibility for the accuracy and completeness of the information contained.

For the complete Terms & Conditions, see

<https://rpswilco.com/#/tnc>



## Included

- Site Survey
- Obstacles (if available)
- Nearby Aerodromes
- Canadian Aviation Regulations
- GFA
- Aerodrome Supplements
  - METAR & TAF (if available)
  - NOTAMS
  - CFS

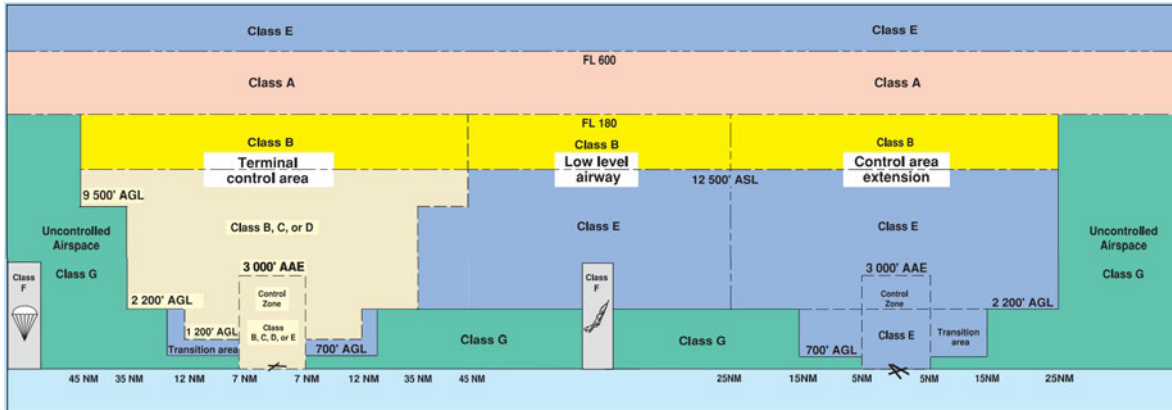
## Flight Map



## MAP Details

	Latitude	Longitude
 MODEL	49° 17' 22.50" N ( 49.29 )	122° 29' 21.30" W ( -122.489 )
 Pilot	49° 17' 26.10" N ( 49.2906 )	122° 29' 24.90" W ( -122.4903 )

## Airspace Classification



## Overlying Airspaces

Class	Name	Floor	Ceiling
E	V304 Airway	2200AGL	12500MSL
B	V304 Airway	12500MSL	18000MSL
E	T775 Airway	2200AGL	12500MSL
B	T775 Airway	12500MSL	18000MSL
E	Pitt Meadows, BC CAE	2000MSL	12500MSL
B	Pitt Meadows, BC CAE	12500MSL	18000MSL
C	Vancouver, BC TCA	4500MSL	6500MSL
F	CYA185(A)(T)(H) ALOUETTE LAKE, BC	SFC	4000MSL
C	Vancouver, BC TCA	6500MSL	8500MSL
C	Vancouver, BC TCA	8500MSL	9500MSL
E	V349 Airway	2200AGL	12500MSL
B	V349 Airway	12500MSL	18000MSL
B	T611 Airway	12500MSL	18000MSL
E	T611 Airway	2200AGL	12500MSL
E	T629 Airway	2200AGL	12500MSL
B	T629 Airway	12500MSL	18000MSL
B	Vancouver, BC TCA	12500MSL	18000MSL
C	Vancouver, BC TCA	9500MSL	12500MSL

## Nearest Aerodromes & Distance from Operation

FORT LANGLEY (CAS4 WATERDROME Reg)	Lat: 49.167	Long: 122.533	13.996 KM	7.56 NM
FORT LANGLEY (CBQ2 AERODROME Reg)	Lat: 49.168	Long: 122.557	14.387 KM	7.77 NM
PITT MEADOWS (CYPK AERODROME/HELIPORT Cert)	Lat: 49.216	Long: 122.713	18.184 KM	9.82 NM
PITT MEADOWS (CAJ8 WATERDROME Reg)	Lat: 49.209	Long: 122.709	18.295 KM	9.88 NM

# Canadian Aviation Regulations

## Division III — General Operating and Flight Rules

For full listing please visit <https://laws-lois.justice.gc.ca/eng/regulations/SOR-96-433/FullText.html#s-901.27>

### Visual Line-of-sight

- **901.11 (1)** Subject to subsection (2) no pilot shall operate a remotely piloted aircraft system unless the pilot or a visual observer has the aircraft in visual line-of-sight at all times during flight.
- **(2)** A pilot may operate a remotely piloted aircraft system without the pilot or a visual observer having the aircraft in visual line-of-sight if the operation is conducted in accordance with a special flight operations certificate — RPAS issued under section 903.03.

### Procedures

- **901.23 (1)** No pilot shall operate a remotely piloted aircraft system unless the following procedures are established:
  - **(a)** normal operating procedures, including pre-flight, take-off, launch, approach, landing and recovery procedures; and
  - **(b)** emergency procedures, including with respect to
    - **(i)** a control station failure,
    - **(ii)** an equipment failure,
    - **(iii)** a failure of the remotely piloted aircraft,
    - **(iv)** a loss of the command and control link,
    - **(v)** a fly-away, and
    - **(vi)** flight termination.
- **(2)** If the manufacturer of the remotely piloted aircraft system provides instructions with respect to the topics referred to in paragraphs (1)(a) and (b), the procedures established under subsection (1) shall reflect those instructions.
- **(3)** No pilot shall conduct the take-off or launch of a remotely piloted aircraft unless the procedures referred to in subsection (1) are reviewed before the flight by, and are immediately available to, each crew member.
- **(4)** No pilot shall operate a remotely piloted aircraft system unless the operation is conducted in accordance with the procedures referred to in subsection (1).

### Site Survey

**901.27** No pilot shall operate a remotely piloted aircraft system unless, before commencing operations, they determine that the site for take-off, launch, landing or recovery is suitable for the proposed operation by conducting a site survey that takes into account the following factors:

- **(a)** the boundaries of the area of operation;
- **(b)** the type of airspace and the applicable regulatory requirements;
- **(c)** the altitudes and routes to be used on the approach to and departure from the area of operation;
- **(d)** the proximity of manned aircraft operations;
- **(e)** the proximity of aerodromes, airports and heliports;
- **(f)** the location and height of obstacles, including wires, masts, buildings, cell phone towers and wind turbines;
- **(g)** the predominant weather and environmental conditions for the area of operation; and
- **(h)** the horizontal distances from persons not involved in the operation.

### Operations at or in the Vicinity of an Aerodrome, Airport or Heliport

- **901.47 (1)** No pilot shall operate a remotely piloted aircraft at or near an aerodrome that is listed in the *Canada Flight Supplement* or the *Water Aerodrome Supplement* in a manner that could interfere with an aircraft operating in the established traffic pattern.
- **(2)** Subject to section 901.73 no pilot shall operate a remotely piloted aircraft at a distance of less than
  - **(a)** three nautical miles from the centre of an airport; and
  - **(b)** one nautical mile from the centre of a heliport.
- **(3)** No pilot shall operate a remotely piloted aircraft at a distance of less than three nautical miles from the centre of an aerodrome operated under the authority of the Minister of National Defence unless the operation is conducted in accordance with a special flight operations certificate — RPAS issued under section 903.03.

### Records

- **901.48 (1)** Every owner of a remotely piloted aircraft system shall keep the following records:
  - **(a)** a record containing the names of the pilots and other crew members who are involved in each flight and, in respect of the system, the time of each flight or series of flights and
  - **(b)** a record containing the particulars of any mandatory action and any other maintenance action, modification or repair performed on the system, including
    - **(i)** the names of the persons who performed them,
    - **(ii)** the dates they were undertaken,
    - **(iii)** in the case of a modification, the manufacturer, model and a description of the part or equipment installed to modify the system, and
    - **(iv)** if applicable any instructions provided to complete the work.
- **(2)** Every owner of a remotely piloted aircraft system shall ensure that the records referred to in subsection (1) are made available to the Minister on request and are retained for a period of
  - **(a)** in the case of the records referred to in paragraph (1)(a), 12 months after the day on which they are created; and
  - **(b)** in the case of the records referred to in paragraph (1)(b), 24 months after the day on which they are created.
- **(3)** Every owner of a remotely piloted aircraft system who transfers ownership of the system to another person shall, at the time of transfer, also deliver to that person all of the records referred to in paragraph (1)(b).

# CANADA WATER AERODROME SUPPLEMENT

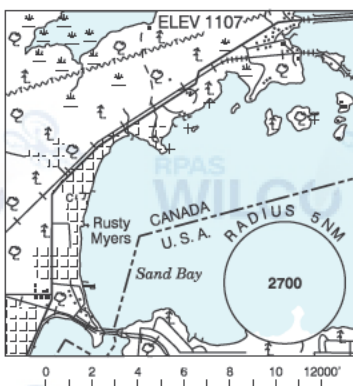
Effective 0901Z 24 March 2022 to 0901Z 20 April 2023

## B52. AERODROME/FACILITY DIRECTORY

### FORT FRANCES ON

CJM8

<b>REF</b>	N48 37 40 W93 21 28 2NE 0° (2014) UTC-6(5) Elev 1107' A5007
<b>OPR</b>	Rusty Myers Flying Svc Ltd 807-274-5335 Reg
<b>PF</b>	B-1 C-2,3,4,5,6
<b>CUST</b>	AOE/15 888-226-7277 14-06Z†
<b>FLT PLN</b>	Pilots to open/close VFR flt plan with London rdo, FISE or by phone
<b>FIC</b>	London 866-WXBRIEF (Toll free w/ in Canada) or 866-541-4104 (Toll free within Canada & USA)
<b>WX</b>	AUTO at Falls Intl (KINL) 218-285-2996 (see COMM)

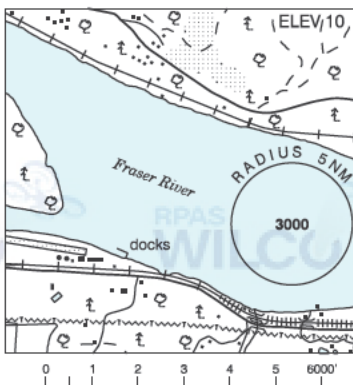


<b>SERVICES</b>	
<b>FUEL</b>	100LL, JA-1
<b>OIL</b>	100
<b>S</b>	2,3,5
<b>A/D DATA</b>	Open water mid May-mid Oct. Sand bottom, docks & ramp. Sheltered exc in E winds.
<b>COMM</b>	
<b>RCO</b>	London rdo 123.55 (FISE) 126.7 (bcst) (may not be receivable on gnd)
<b>ATF</b>	UNICOM ltd hrs O/T tfc 122.8 5NM 4200 ASL
<b>AUTO</b>	120.0 at Falls Intl (KINL)
<b>NAV</b>	
<b>NDB</b>	YAG 376 (L) N48 41 23 W93 32 21
<b>PRO</b>	Cdn Cust avbl to float acft at Rainy Lake Sports & Tackle dock painted as Cdn flag at N48 36 45 W93 22 05.
<b>CAUTION</b>	Heavy swells with E winds. 4 cable crossing support twr 1468 ASL (355 AGL) 2.2NM to 3.3NM NE A/D.

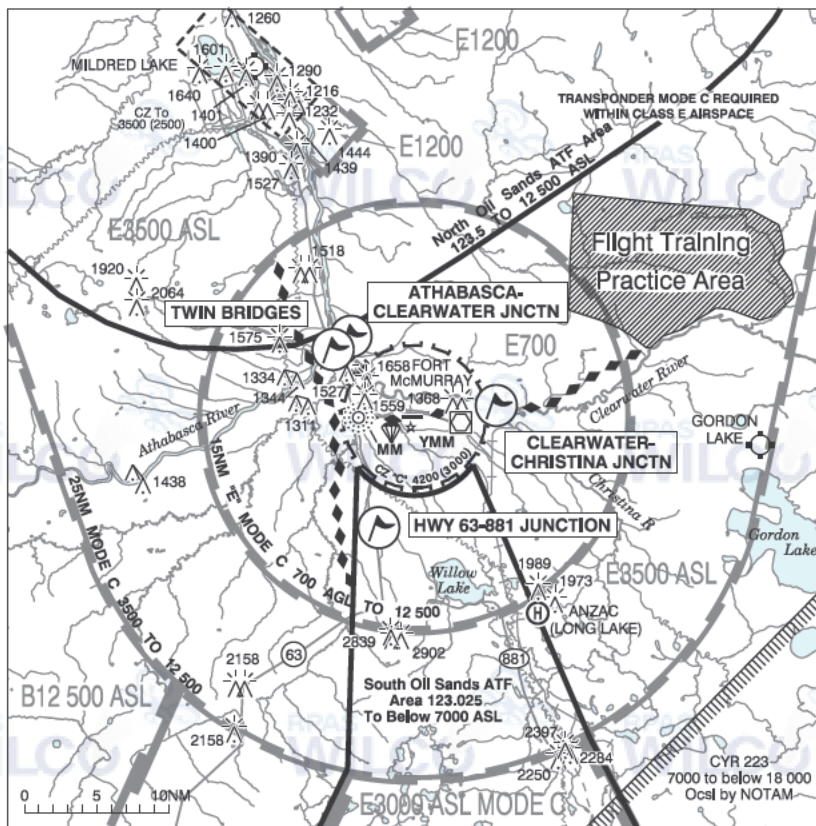
### FORT LANGLEY BC

CAS4

<b>REF</b>	N49 10 W122 32 17°E (2013) UTC-8(7) Elev 10' VTA A5004
<b>OPR</b>	Fort Langley Avn 604-888-1922 Reg PPR
<b>PF</b>	A-1 C-2,3,4,5 D-6
<b>FLT PLN</b>	
<b>FIC</b>	Kamloops 866-WXBRIEF (Toll free within Canada) or 866-541-4101 (Toll free within Canada & USA)
<b>SERVICES</b>	
<b>FUEL</b>	100LL, JA
<b>S</b>	1,4,5
<b>A/D DATA</b>	Current 3-5 kt, sand beach & ramp.
<b>COMM</b>	
<b>ATF</b>	tfc 122.725 2NM 1500 ASL
<b>NAV</b>	
<b>VOR</b>	PITT MEADOWS YPK 112.4 N49 12 57 W122 42 54 (44')
<b>PRO</b>	Circuits 600' over river.



## FORT McMURRAY VFR TERMINAL PROCEDURES CHART



LOCATION	IDENT	LAT/LONG
ATHABASCA - CLEARWATER JUNCTION	VCABA	N56°44.0 W111°23.2
CLEARWATER - CHRISTINA JUNCTION	VCCLW	N56°39.9 W111°03.1
HWY 63 - 881 JUNCTION	VCJCT	N56°31.5 W111°18.1
TWIN BRIDGES	VCTWB	N56°43.9 W111°23.6

## BRITISH COLUMBIA

## AERODROME/FACILITY DIRECTORY

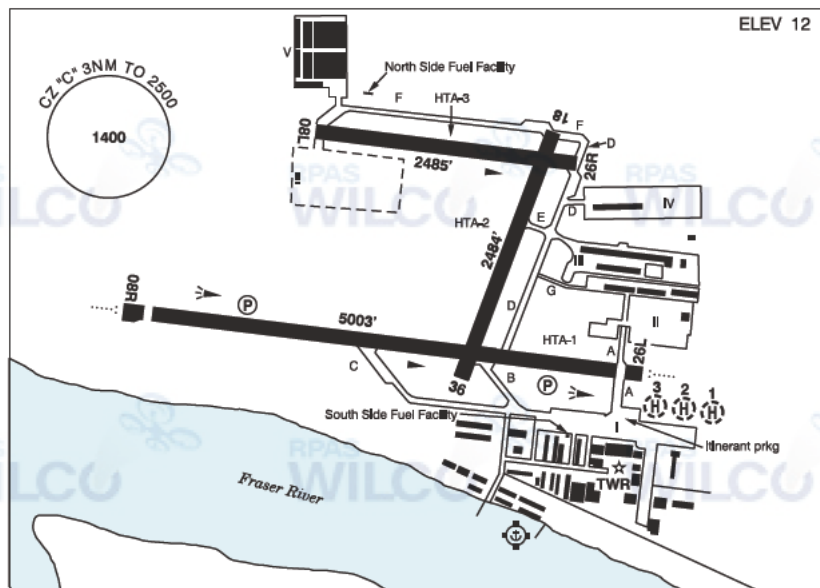
## FORT LANGLEY BC

CBQ2

<b>REF</b>	N49 10 04 W122 33 27 Adj 17°E (2014) UTC-8(7) Elev 33' VTA A5004	
<b>OPR</b>	Fort Langley Avn 604-888-1922 PPR Reg	
<b>PF</b>	A-1 C-2,3,4,5 D-6	
<b>FLT PLN</b>		
<b>FIC</b>	Kamloops 866-WXBRIEF (Toll free within Canada) or 866-541-4101 (Toll free within Canada & USA)	
<b>SERVICES</b>		
<b>FUEL</b>	100LL, JA	
<b>S</b>	1,4,5	
<b>RWY DATA</b>	Rwy 08(082°)/26(262°) 5510X60 ASPH	
<b>RCR</b>	Opr 604-888-1922 Ltd win maint	
<b>COMM</b>		
<b>ATF</b>	tfc 122.725 2NM 1500 ASL	
<b>NAV</b>		
<b>VOR</b>	PITT MEADOWS YPK 112.4 N49 12 57 W122 42 54 (44')	
<b>PRO</b>	Rgt hand circuits Rwy 26 (CAR 602.96). Circuit hgt 1000 ASL. No training flights. Avoid overflight of community to W. Procedures for crossing the southern Strait of Georgia within Tml Class C airspace refer to Vancouver Intl, VTPC for Crossing the Southern Strait of Georgia.	
<b>CAUTION</b>	Trees to 80 AGL along N side	

## PITT MEADOWS BC

CYPK



<b>REF</b>	N49 12 58 W122 42 48 1SW 17°E (2013) UTC-8(7) Elev 12' VTA A5004 LO2 T1 CAP
<b>OPR</b>	Pitt Meadows Aprt Society 604-465-8977 Cert
<b>PF</b>	A-1,2,3,7 C-4,5,6
<b>CUST</b>	AOE/CAN
<b>FLT PLN</b>	
<b>FIG</b>	Kamloops 866-WXBRIEF (Toll free within Canada) or 866-541-4101 (Toll free within Canada & USA)
<b>ACC</b>	Vancouver IFR 604-586-4590/4591; IFR tng flts PPR ctc 604-586-4592
<b>WX</b>	LAWO 15-07Z‡
<b>SERVICES</b>	
<b>FUEL</b>	100LL (Cardlock) Helis not auth South Side Fuel Facility unless dollied, JA-1 (by truck)
<b>OIL</b>	All
<b>S</b>	1,2,3,4,5
<b>PVT ADV</b>	Integrity Flight Support (by truck) 778-808-3312 1530-0100Z‡ Mon-Fri exc hols, O/T call out chg; Aeroclub of BC (Cardlock) N & S Side Fuel Facilities 604-465-0446.
<b>RWY DATA</b>	Rwy 08R(080°)/26L(260°) 5003x100 ASPH Thld 08R displ 197' Thld 26L displ 164' Rwy 08L(080°)/26R(260°) 2485x75 ASPH Rwy 18(185°)/36(005°) 2484x75 ASPH RESA: 08R/26L 492'
<b>RWY CERT</b>	Rwy 08R/26L AGN IIIA Rwy 08L/26R AGN I Rwy 18/36 AGN I
<b>TWY CERT</b>	Twy: D, E, F, G AGN I
<b>APRON</b>	Apron I Itinerant prkg N of ATB, E of Twy A (see sketch). Apron III and V Pvt.
<b>RCR</b>	Twr 604-465-9723 PLR/PCN Rwy 08L/26R no win maint



## BRITISH COLUMBIA

## AERODROME/FACILITY DIRECTORY

## PITT MEADOWS BC (Cont'd)

CYPK

<b>HELI DATA</b>	Parking Pad 1 & 2: TLOF 68' dia ASPH Max heli overall length 57'. Day use tkof/lgd & prkg, night use prkg only. Parking Pad 3: TLOF 50' dia ASPH Max heli overall length 42'. Day use tkof/lgd & prkg, night use prkg only.
<b>LIGHTING</b>	08R-AO(TE ME) P2, 26L-AO(T ME) P2, 18-(TE ME), 36-(TE ME), 06-14Z± O/T ARCAL-126.3 key mic 3 times within 5 sec for 26L, & 5 times within 5 sec for 08R & 7 times within 5 sec for 18-36 for 15 min duration lgt.
<b>COMM</b>	<p><b>ATIS</b> 125.0 1-877-517-2847 15-07Z±</p> <p><b>GND</b> 123.8 15-07Z±</p> <p><b>TWR</b> Pitt 126.3 (V) 15-07Z± (emerg only 604-465-9723)</p> <p><b>MF</b> ttc 126.3 07-15Z± 3NM 2500 ASL (CAR 602.98)</p>
<b>NAV</b>	<b>VOR</b> YPK 112.4 N49 12 57 W122 42 54 (44')
<b>PRO</b>	<p>Rgt hand circuits Rwy 08R, 18 &amp; 26R (CAR 602.96) circuit hgt 1000 ASL. Seaplane circuits 500 ASL on S side of Fraser River. Procedures for crossing the southern Strait of Georgia within Tml Class C airspace refer to Vancouver Intl, VTPC for Crossing the Southern Strait of Georgia.</p> <p><b>ATS REQUIREMENTS:</b> All VFR acft arriving, departing or transiting the Vancouver or Victoria Tower Class C or D airspace require a transponder code. - All acft departing Vancouver or Victoria Intl (including Water Aerodrome) call Kamloops FIC at 866-541-4101 or PAC RDO 122.5 or 123.15 for code assignment at least 30 min prior to flight or file a VFR Flight Plan/Flight Itinerary. - All acft arriving Vancouver Intl (including Water Aerodrome) or transiting Vancouver or Victoria Control Zones obtain a code from one of the following ATS units: Vancouver Harbour, Nanaimo, Victoria Harbour, Boundary Bay, Langley, Abbotsford or Pitt Meadows, or call Kamloops FIC at 866-541-4101 or PAC RDO 122.5 or 123.15. - All acft arriving Victoria Intl from a non NAV CANADA site call Kamloops FIC at 866-541-4101 or PAC RDO 122.5 or 123.15 for code assignment at least 30 minutes prior to flight or file a VFR Flight Plan/Flight Itinerary.</p> <p><b>NIGHT RESTRICTIONS:</b> - Circuit tng Rwy 08R &amp; 08L not auth 05-15Z± PPR. - Circuit tng Rwy 26L, 26R, 18/36 not auth 06-15Z± PPR. - Turbojet, turbofan and turboprop night circuit tng PPR. - All acft avoid overflight of noise-sensitive areas, unless unable due to crosswind limitations, operational/safety considerations, or as directed by ATC.</p> <p><u>When Tower Closed:</u> - Rwy 08R/18/26L Dep: Acft climb rwy hdg to 1000 ASL BPOC. Best Rate of Climb. Avoid flt over built-up areas in downwind and crosswind legs. - Rwy 36 Dep: Left hand circuit. When safe turn left to 1000 ASL BPOC. Best Rate of Climb. Avoid flt over built-up areas in downwind and crosswind legs. - Rwy 08L/26R not to be used when twr is clsd unless rqrd due to operational/safety considerations.</p> <p><b>HELI:</b> All Turbine Heli: Continuous circuits prohibited unless approved by APM. - Arr/dep: Avoid low flt over built-up areas, unless directed by ATC.</p>
<b>CAUTION</b>	Coyotes in vic of rwys. 160' lit crane 2NM NW of A/D. Quarry blasting ops within 0.6NM radius N49 17 14 W122 39 33 (aprx 4.7NM N of A/D) to 300 AGL. Industrial complex S of 26L apch, do not mistake bldg floodlights for rwy edge lights during low vis conds or ngt ops.

# CANADA WATER AERODROME SUPPLEMENT

Effective 0901Z 24 March 2022 to 0901Z 20 April 2023

AERODROME/FACILITY DIRECTORY B161

## PICKLE LAKE ON (Cont'd)

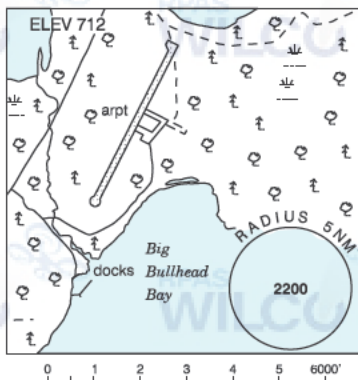
CKG4

<b>PRO</b>	A/cft not to overfly townsite below 1000 AGL. Ldg or tkof not authorized within area depicted in sketch.
<b>CAUTION</b>	Lgt'd twr 1528 ASL 1.4NM ENE. Unlgt'd twr 1357 ASL 0.6NM ENE. Land A/D 1.3NM S.

## PINE DOCK MB

CKT8

<b>REF</b>	N51 36 39 W96 49 02 1S 3°E (2014) UTC-6(5) Elev 712' A5007
<b>OPR</b>	Kitchi Airways 204-276-2463 Reg PPR
<b>PF</b>	B-1 C-2,4,5
<b>FLT PLN</b>	Pilots to open/close VFR flt plan with Edmonton rdo, FISE or by phone. Edmonton 866-WXBRIEF (Toll free within Canada) or 866-541-4102 (Toll free within Canada & USA)
<b>SERVICES</b>	
<b>FUEL</b>	100LL, JA
<b>S</b>	4
<b>PVT ADV</b>	Kitchi Airways 124.8
<b>A/D DATA</b>	Open water mid May-mid Nov
<b>COMM</b>	
<b>ATF</b>	tfc 122.8 5NM 3800 ASL

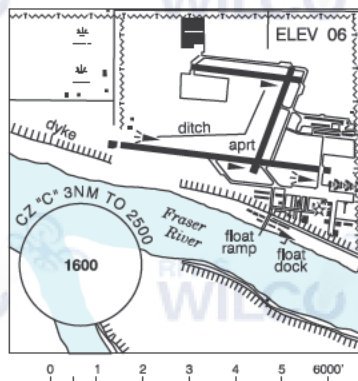


## PISTOL LAKE ON — See MINAKI / PISTOL LAKE

## PITT MEADOWS BC

CAJ8

<b>REF</b>	N49 12 34 W122 42 34 1SW 17°E (2013) UTC-8(7) Elev 06' VTA A5004
<b>OPR</b>	Pitt Meadows Aprt Society 604-465-8977 15-01Z† Mon-Fri Reg
<b>PF</b>	A-1,2,3,7 at adj land A/D C-4,5,6
<b>FLT PLN</b>	
<b>FIG</b>	Kamloops 866-WXBRIEF (Toll free within Canada) or 866-541-4101 (Toll free within Canada & USA)
<b>WX</b>	LAWO 15-07Z†
<b>SERVICES</b>	
<b>FUEL</b>	100LL, JA-1 at adj land A/D
<b>OIL</b>	All
<b>S</b>	1,2,3,4,5 at adj land A/D
<b>A/D DATA</b>	Tidal range 4', current 3-8 kt.
<b>COMM</b>	
<b>ATIS</b>	125.0 1-877-517-2847 15-07Z†
<b>GND</b>	123.8 15-07Z†
<b>TWR</b>	Pitt 126.3 (V) 15-07Z†
<b>MF</b>	tfc 126.3 07-15Z† 3NM 2500 ASL (CAR 602.98)



# CANADA WATER AERODROME SUPPLEMENT

Effective 0901Z 24 March 2022 to 0901Z 20 April 2023

## B162 AERODROME/FACILITY DIRECTORY

### PITT MEADOWS BC (Cont'd)

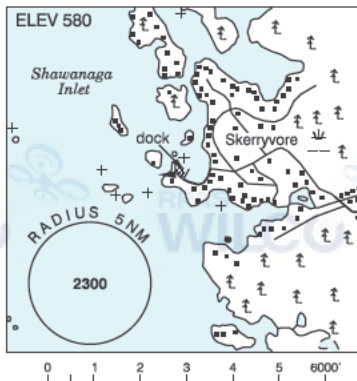
CAJ8

<b>NAV</b>	<b>VOR</b> YPK 112.4 N49 12 57 W122 42 54
<b>PRO</b>	Circuit altitude for seaplanes 500 ASL, all circuits on S side of Fraser River. Arr/dep avoid low flt over built-up areas, or as directed by ATC. Eastbound dep on Fraser River initiate tkof W of float ramp, or as directed by ATC.
<b>CAUTION</b>	Drifting logs. Lower end of seaplane launching ramp is less than 1' below zero tide level; caution at low tides.

### POINTE AU BARIL STATION ON

CPB6

<b>REF</b>	N45 32 24 W80 23 15 4SW 11°W UTC-5(4) Elev 580' A5000
<b>OPR</b>	Jeremy and Ryan Edwards 647-202-9995 or 416-400-5244 Reg
<b>PF</b>	B-5
<b>FLT PLN</b>	<b>FIC</b> London 866-WXBRIEF (Toll free w/in Canada) or 866-541-4104 (Toll free within Canada & USA)
<b>A/D DATA</b>	Open water May-mid Nov, sandy bottom. Dock depth 5'.
<b>COMM</b>	<b>ATF</b> tfc 123.2 5NM 3600 ASL
<b>CAUTION</b>	Rock shoal 82' NE of boathouse marked with white buoy. Enter bay from N. Remain E of island.



### POINTS NORTH LANDING SK

CKC2

<b>REF</b>	N58 16 04 W104 04 48 Adj S 9°E (2014) UTC-6 Elev 1550' aprx A5024
<b>OPR</b>	Points North Freight Forwarding Inc 306-633-2137 Reg
<b>PF</b>	B-1,2,5 PN Opr
<b>FLT PLN</b>	<b>FIC</b> Edmonton 866-WXBRIEF (Toll free within Canada) or 866-541-4102 (Toll free within Canada & USA)
<b>SERVICES</b>	<b>FUEL</b> 100LL, JA-1 (FSII avbl) <b>OIL</b> All <b>S</b> 1,2,4,6
<b>A/D DATA</b>	Open water Jun-mid Oct. Sand bottom, ramp.
<b>COMM</b>	<b>ATF</b> 68 Points North UNICOM ltd hrs O/T tfc 123.3 5NM centred on Points North Landing land A/D adj 4700 ASL
<b>CAUTION</b>	Extv tfc adj land aprt. VHF rdo twr 85 AGL on apron. Lgtd twr 1991 ASL (370 AGL) 3NM SW of A/D.

